



Switch/3rd Rail Heater

Intelligent remote control solution for melting snow and ice.



The RailComm Switch/3rd rail heater system provides an automated method for preventing ice and snow build-up that can hamper rail operations.

The RailComm® Switch/3rd Rail Heater Remote Controller provides an efficient method for operating and monitoring multiple switch heaters, snow melters, and 3rd rail heaters from a central location.

Remote Control

Centralized remote control produces dramatically lower energy costs, increased reliability

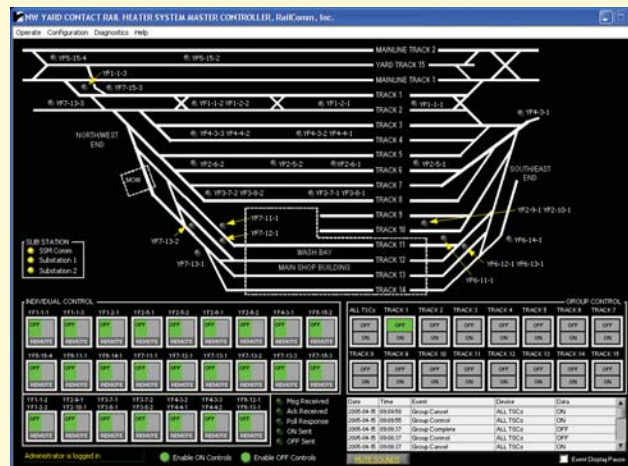
At A Glance

- ✓ Higher productivity through centralized remote control of switch heaters, snow melters and 3rd rail heaters
- ✓ Save power, improve safety and lower energy costs through intelligent cycling of heater element controls
- ✓ Lower maintenance costs with built-in hour meter for power consumption and element life cycle analysis
- ✓ Control heaters using RailComm Master Control Panel (MCP) software and/or conveniently located field control panels

and improved safety performance by automating a traditionally manual operation.

All of your switch and 3rd rail heaters can be operated automatically via remote control from a centrally located workstation and/or conveniently located field control panels. Productivity and safety are greatly improved with wireless remote control technology,

Master Control Panel Software Simplifies Operation



RailComm's Master Control Panel is customized for each installation and provides a convenient method for individual or group heater control. ON/OFF time can be automatically tracked.



Control Anything Anywhere™

RailComm, Inc.
1387 Fairport Road, Box 8
Fairport, NY 14450-0008

Toll Free: 877-724-5266
(877-RAILCOMM)

www.railcomm.com

eliminating the need for workers to perform the dangerous activity of manually operating switch and 3rd rail heaters.

Reduce Energy Costs

RailComm's Switch/3rd Rail Heater Remote Controller also significantly reduces energy costs because heaters are energized only when necessary through RailComm's configurable Master Control Panel software.

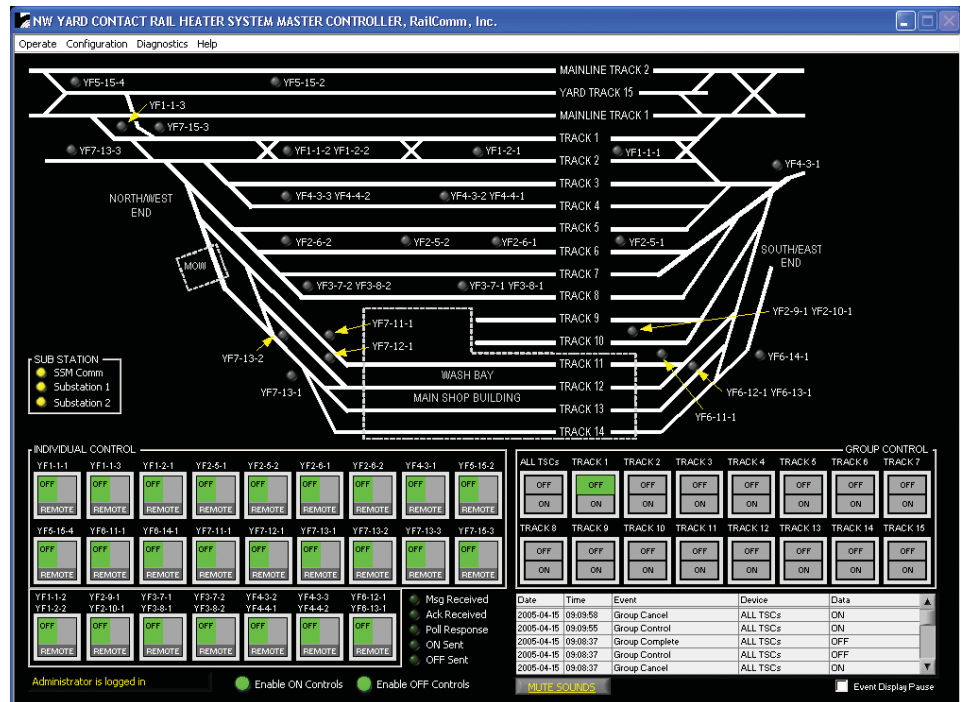
Using built-in diagnostics, maintenance personnel have all of the data they need before going out to the field. Each heater element is monitored by the system and logged to a file. When an element failure is detected, it can be alarmed and serviced before it affects train movement.

Master Control Panel

The RailComm Master Control Panel (MCP) program is a maintenance tool that can be custom-configured for each installation to provide monitoring and remote control capability of all heaters connected to the control system.

The Master Control Panel provides maintenance personnel the capability to monitor the status of indications received by each heater controller using a graphical user interface. The main window of the RailComm Master Control Panel is organized into sections of common information including:

- **Individual Control:** Buttons and indicators used to both control on/off and display status of individual heaters.
- **Group Control:** Buttons and indicators used to control groups of heaters, and allow multiple heaters associated with a group to be controlled on/off as a set. Specialized RailComm software prevents user from inadvertently turning on too many heaters simultaneously



The Master Control Panel is customized for each application. Visual indicators provide the ability to control individual heaters or groups of heaters. The event log captures detailed information on system operation. System tools make the system easy to setup, operate, monitor and maintain.

placing too large of a demand on the power system. The MCP uses a configurable delay time between turning on/off individual heaters and when heaters are turned on, a queue is created and individual units turn on/off based on appropriate timing intervals. From the tower, heaters can be turned on without requiring additional monitoring until it is time to turn them off.

- **Event Log:** This log provides a continuously updated record of user and machine-initiated actions and heater response data. The Event Log is updated when any user or machine-initiated event occurs, or when a new indication state is received from a heater. It is automatically time-stamped with the current date, time, event that occurred, plus the name of the device and data to record.
- **Administrative & Configuration Tools:** System management tools to set login / logout

and passwords and user/administrator settings.

- **Diagnostics Menu:** Diagnostic screens for communication, control and indication status.
- **Communication Indications:** Status of communications between the MCP program and remote heater controllers.
- **Substation Table:** status of substation inputs.
- **Sound Controls:** control and muting of audible alarms.



RailComm is a registered trademark of RailComm Inc. Copyright © 2006. RailComm, Inc.