



RailComm DOC®

Domain Operations Controller for C3i applications.



At A Glance

- ✓ Server-based software platform is customizable and provides flexibility for mainline and/or yard control
- ✓ DOC® applications include solutions for Centralized Traffic Control, Dark Territory Control, Yard Control, Asset Management, SCADA and more
- ✓ Solutions for indication, control, access and distribution of critical operational data across the railroad enterprise
- ✓ Provides scalable, extensible, and open architecture platform for future expansion

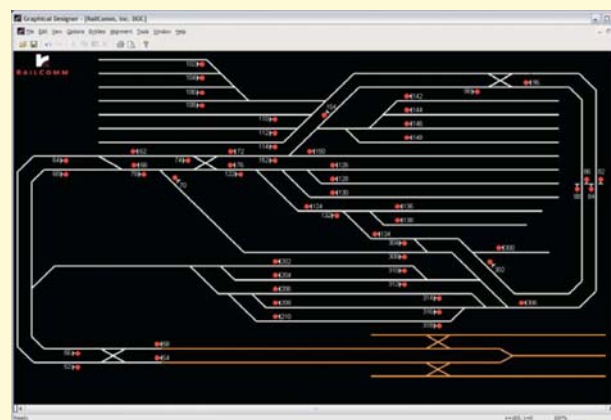
DOC® software platform provides an integrated software solution that unifies RailComm's approach to Command, Communications and Control.

RailComm's DOC® (Domain Operations Controller) is an advanced Command, Control, Communications and information (C3i) server-based platform that supports a wide variety of integrated solutions for indication, control, access and distribution of critical operational data across the railroad enterprise.

DOC® is a next generation operating platform focused on C3i

applications within the rail and transit operating domain. With DOC®, data generated by remote mobile or fixed embedded controllers is collected, analyzed, recorded and shared between multiple back-office systems. DOC® is the central control platform for any Machine-to-Machine (M2M) application. The integration of Microsoft Windows Server technology, object-oriented C++

Effective Tools for Visualization and Control



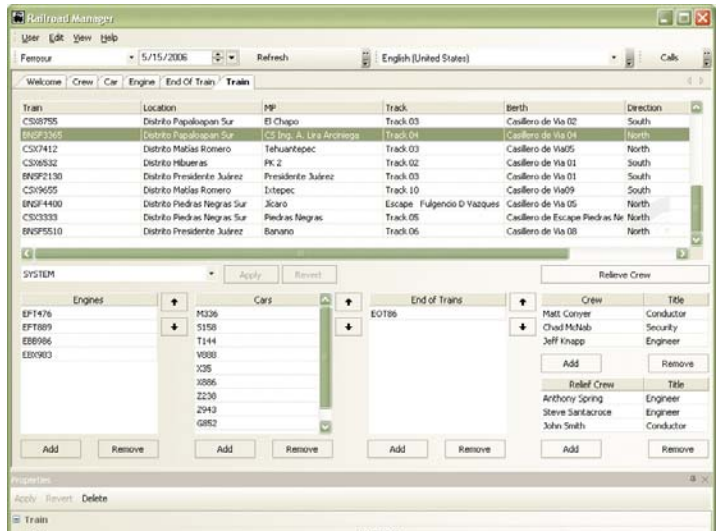
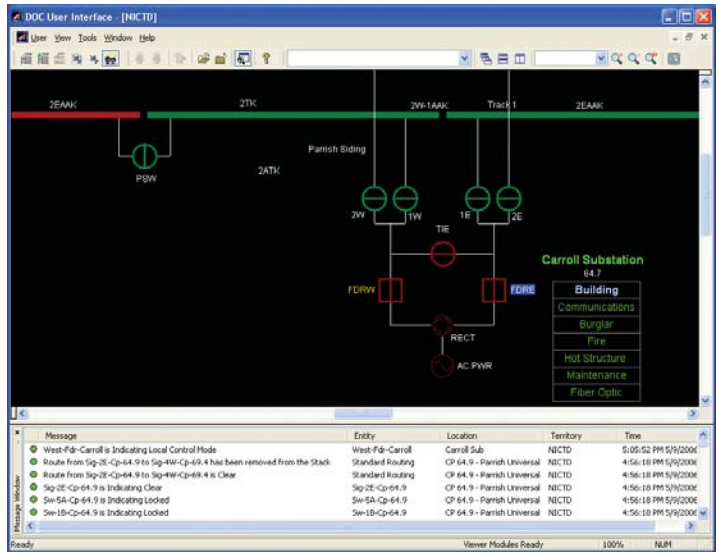
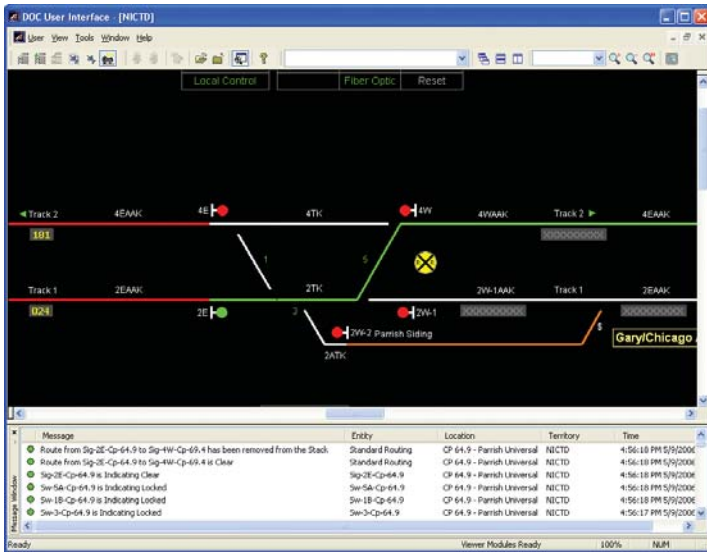
With the RailComm DOC®: Yard system, users can easily plan end-to-end switching moves and stack routes from a PC located in the Yard Master's office.



RailComm, Inc.
1387 Fairport Road, Box 8
Fairport, NY 14450-0008

Toll Free: 877-724-5266
(877-RAILCOMM)

www.railcomm.com



DOC®:DTC

DOC®:RAILROAD MANAGER

programming, and SQL database technology provides a scalable, extensible, and open architecture platform for future expansion.

A Higher Level of Integration

DOC® centralizes C3i to support integrated railroad/ passenger rail applications, including mainline dispatching and yard control systems. By adding C3i to your operations, and applying DOC® logic, you will obtain the necessary information that will help you meet the ever-increasing demands for improved efficiency, higher productivity, and reduced operating costs.

DOC® Applications

Centralized Traffic Control:

DOC®:CTC is a Computer Aided

Dispatching system used to automate the dispatching functions necessary for efficient, signaled mainline rail operation.

Dark Territory Control:

DOC®:DTC is a Computer Aided Dispatching system used for dispatching trains in dark territory operating under the GCOR, CCOR and NORAC rule sets. Additionally, the system can control combinations of CTC and dark territory on the same graphical user interface.

Yard Control:

DOC®:Yard is a Computerized Control system that controls any field device and can coordinate train movement with a yard.

Railroad Manager:

DOC®:Railroad Manager is a computerized Asset Management information system that integrates industry proven communication and identification technology with expert system software to monitor, alert, and report on the real-time location of each car engine, train and crew within your fleet.

SCADA:

DOC®:SCADA is a computerized Supervisory Control and Data Acquisition tool including the ability to interface with, report on, and control a wide variety of devices.



RAILCOMM
Control Anything Anywhere™