



RAILCOMM

Blue Flag Indicator

Wireless remote control of blue flags boosts productivity.



The RailComm BFI™ provides blue LED light indicators for remote controlled flagging protection of mechanical maintenance, repair, and fueling operations.

Wireless remote control Blue Flag Indication (BFI™) systems from RailComm boost productivity by eliminating the need to drive out to both ends of the train to manually place the blue flag, and later drive out again to remove them.

Blue Flag Remote Control

With RailComm's Blue Flag automation system, once a train pulls into the assigned location,

At A Glance

- ✓ Utilize wireless communications for remote control of blue flags. Save time driving to each end of train to manually apply/remove blue flags
- ✓ Flexible control options include central PC or control panel in yard
- ✓ Log the name and trade of each craft controlling the flag along with date and time. Information can be used in FRA reporting and eliminate the need for a manual logging process
- ✓ LED light indicators are visible in daylight or night time conditions, and configurable for uni-directional or bi-directional operation

the blue flags are remotely turned on using RADIANT data radio technology and control cabinets on each end of the blue flag zone. Remote control of blue flags can be achieved through a central PC located in the Yard Tower or using a control panel in the yard area.

In addition to controlling the blue flags, RailComm's DOC® (Domain Operations Controller) software also provides the option

Flexible Options for Controlling Blue Flags



Using RailComm's Blue Flag Automation System, you can control blue flags from a Central PC using our DOC® (Domain Operations Controller) software and/or using a control panel in the yard area.



RAILCOMM

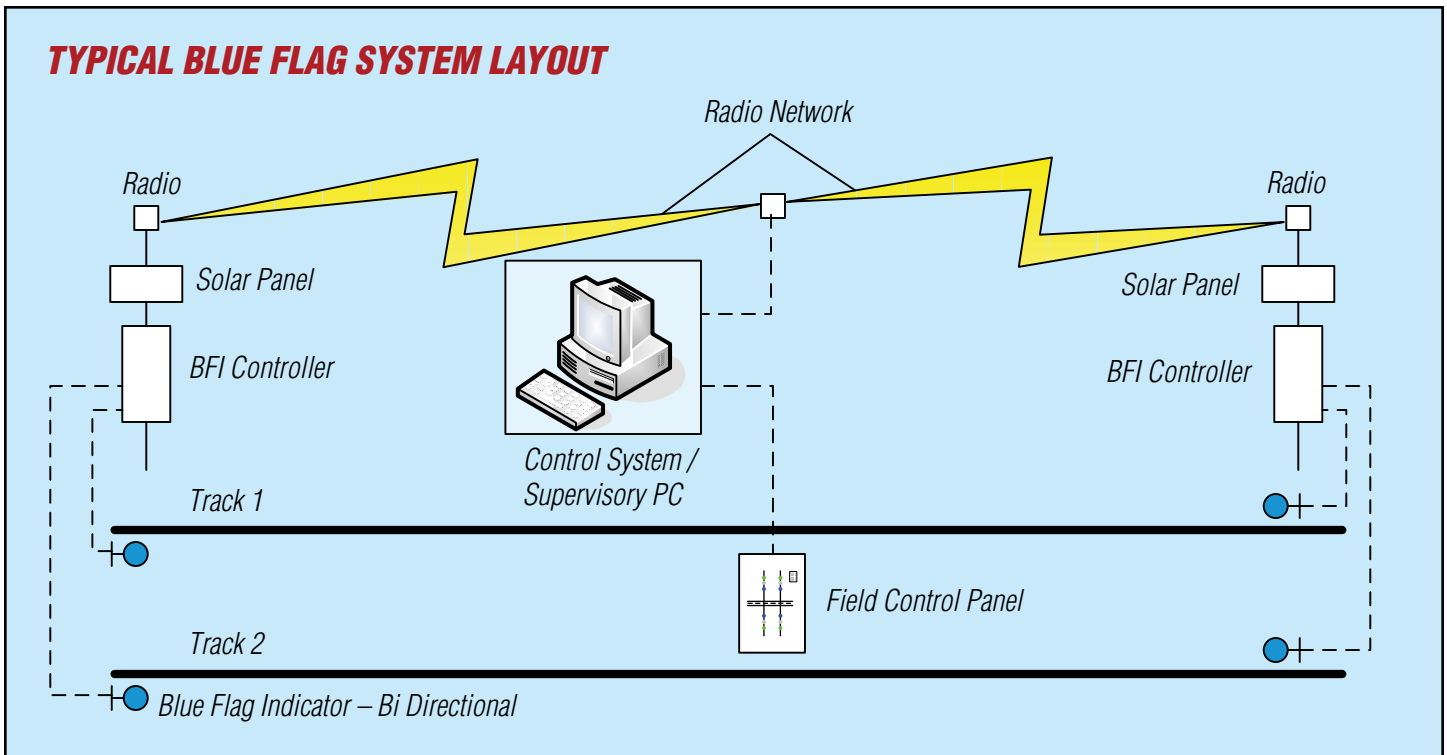
Control Anything Anywhere™

RailComm, Inc.
1387 Fairport Road, Box 8
Fairport, NY 14450-0008

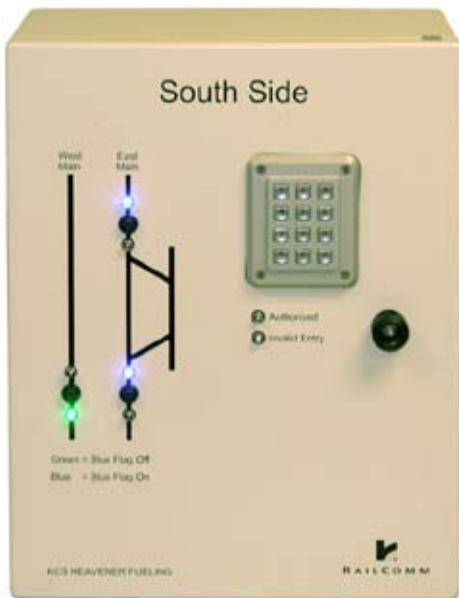
Toll Free: 877-724-5266
(877-RAILCOMM)

www.railcomm.com

TYPICAL BLUE FLAG SYSTEM LAYOUT



The RailComm blue flag system provides flexible system options, controlling blue flags from a Central PC and/or using a field control panel.



Field control panels use LEDs to visually display status of blue flags. Keypad on the control panel provides option for data entry, and security for turning the system on and off using a password. Keylock offers method for security.

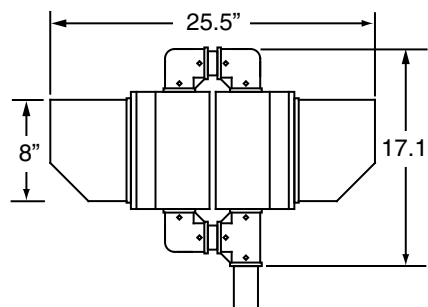
to log the name and trade of each craft controlling the flag, along with the date and time of blue flag activity. This information can be used in FRA reporting, and eliminate the need for a manual logging process.

LED Indicators

The RailComm BFI solution uses blue LED indicators to indicate protection for any mechanical, repair or fueling operations. Radio remote control activates blue LED light indications that are installed adjacent to the protected track. The RailComm BFI can be configured as a bidirectional indicator, utilizing two blue LED indicators, or as a unidirectional indicator using one blue LED indicator.

LED Indicator

Aspect diameter: 8"
Height: 17.1"



BFI System Specifications

Power (Solar/AC)
Input Voltage: 9 – 28 VDC
Nominal Input Voltage: 12 VDC
Input Current (per indicator):
150 mA at 12 VDC
130 mA at 12 VDC (Dim Mode)

Environmental

Condition Operating Limits
Temperature: -40°C to +85°C,
-40°F to +185°F



RAILCOMM
Control Anything Anywhere™

RailComm, Inc.
1387 Fairport Road, Box 8
Fairport, NY 14450-0008

Toll Free: 877-724-5266
(877-RAILCOMM)

www.railcomm.com

RailComm is a registered trademark of RailComm Inc.
Copyright © 2006. RailComm, Inc.