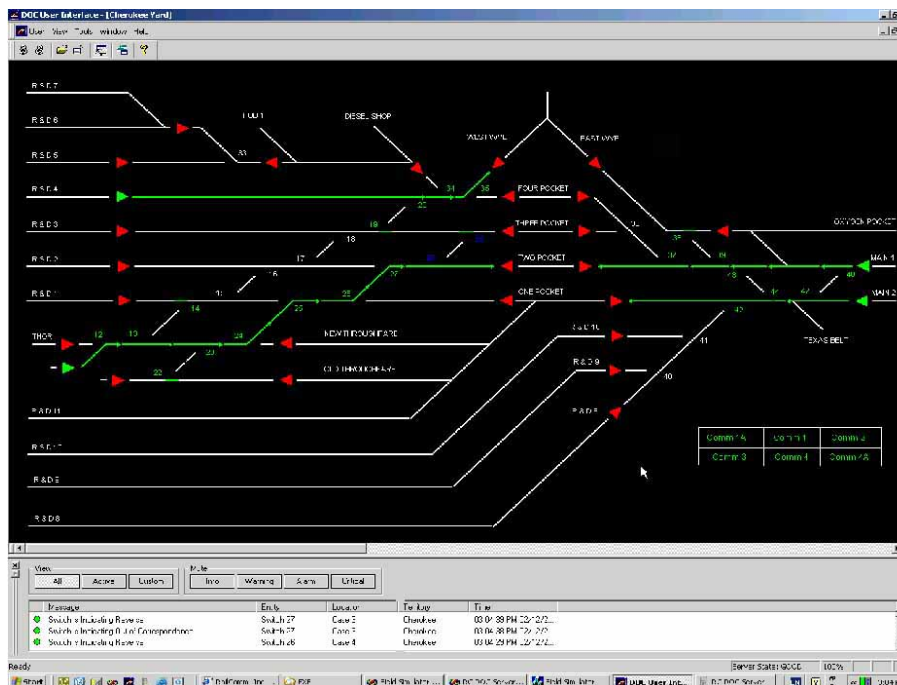


# Yard Domain Operations Controller (DOC®:Yard)

## FEATURES

- ◆ **USER-FRIENDLY INTERFACE** operates within the familiar Windows environment.
- ◆ **SCALABLE** from single workstation up to a fully redundant client server system supporting multiple dispatchers.
- ◆ **UPGRADEABLE** providing migration paths from smaller systems to the more complex allowing you to acquire the tools and functionality needed today and build upon the system as needed in the future.
- ◆ **FLEXIBLE** to interface with a variety of different relational and non-relational database products.
- ◆ **STATE-OF-THE-ART** design to take full advantage of the benefits available of the latest object oriented programming technologies.



## OPTIONS

- ◆ **HOT STANDBY** allows the DOC®:Yard system to remain fully operational even if a hardware failure occurs.
- ◆ **EVENT LOGGER** provides logging of any number of events. Defining "search criteria" on a familiar search menu eliminates the need to browse every event.
- ◆ **PLAYBACK** graphically and review logged events on an unused workstation for personnel training or incident evaluation.
- ◆ **DESIGN TOOLS** that allow customers the ability to independently implement track modifications off line without overhauling the entire system.
- ◆ **ADMIN TOOLS** providing customers with the ability to configure multi-level securities with independent permissions for users, groups, and workstations.

## DESCRIPTION

DOC®:Yard is a Computer Aided Dispatching system using world proven hardware and software tools to control field devices and route trains within a yard.

DOC®:Yard was developed to provide the rail customer with a low cost, highly reliable Computer Aided Yard Dispatching platform that takes advantage of the most recent technology advances to provide the functionality and reliability required by railroad control applications.

With the RailComm DOC®:Yard system users can easily plan end-to-end switching moves and align switches from a PC located in the Yard Master's office.



## ATTRIBUTES

By taking advantage of technology readily available today, DOC<sup>®</sup>:Yard provides the highest level of computer functionality currently found in the market place for:

- Individual Switch Control
- Switch Alignment
- Stacking Moves (Route Stacking)
- Remote Blocking of Switches, Signals, & Tracks
- Remote Derail Control
- Remote Blue Flag Protection
- Event Recording
- Graphical Playback
- Switch Diagnostic Alarms
- Switch Diagnostic Reports

The RailComm DOC<sup>®</sup>:Yard is currently in use as the computer control platform in many rail transit and Class 1 Yards in North America.

The DOC<sup>®</sup>:Yard system includes a set of system tools consisting of:

- **System Configuration** – Allows the user to create system configuration files and set specific operating parameters.
- **Graphical Designer** – Optional tool that allows the user to create drawings of their property and to uniquely customize different territories within a single system.

The DOC<sup>®</sup>:Yard system uses the latest interface protocol providing versatility and flexibility to interface with a variety of different relational and non- relational database products without the need to redesign or redevelop major portions of the system. The DOC<sup>®</sup>:Yard system provides the ability to support multiple communications protocol and methods (serial, modem, modbus, ip) for communicating with the field. The system is designed to accept new methods and protocol (existing and future) with minimal modification.



## SPECIFICATIONS

### KEY TECHNOLOGIES

- Microsoft Windows Operating System
- C++, object-oriented programming
- Commercial off-the-shelf computers, components, and programming libraries
- Fully compliant SQL database



**RAILCOMM**

Toll Free (877) 724-5266

(585) 377-3360

[www.RailComm.com](http://www.RailComm.com)

[info@RailComm.com](mailto:info@RailComm.com)