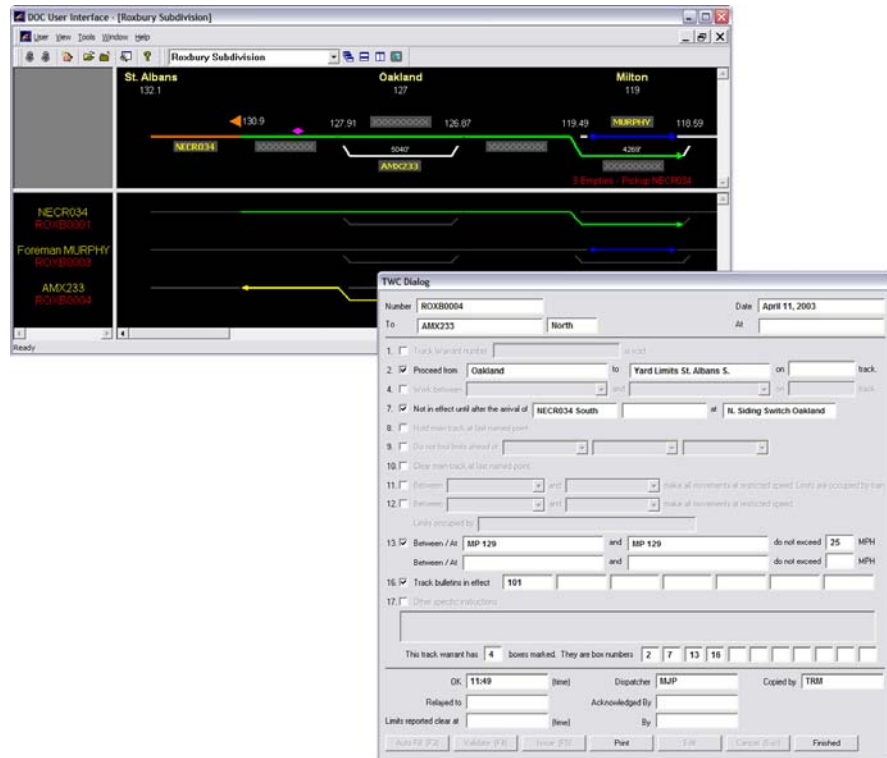


Track Warrant Control Domain Operations Controller (DOC®:TWC)

FEATURES

- ◆ **USER-FRIENDLY INTERFACE** operates within the familiar Windows environment.
- ◆ **SCALABLE** from single workstation up to a fully redundant client server system supporting multiple dispatchers.
- ◆ **UPGRADEABLE** providing migration paths from smaller systems to the more complex allowing you to acquire the tools and functionality needed today and build upon the system as needed in the future.
- ◆ **FLEXIBLE** to interface with a variety of different relational and non-relational database products.
- ◆ **STATE-OF-THE-ART** design to take full advantage of the benefits available of the latest object oriented programming technologies.



OPTIONS

- ◆ **HOT STANDBY** allows the DOC®:TWC system to remain fully operational even if a hardware failure occurs.
- ◆ **ELECTRONIC TRAIN SHEETS** maintains train sheets for 3 years in accordance with FRA regulations.
- ◆ **EVENT LOGGER** provides logging of any number of events. Defining "search criteria" on a familiar search menu eliminates the need to browse every event.
- ◆ **PLAYBACK** graphically and review logged events on an unused workstation for personnel training or incident evaluation.
- ◆ **DESIGN TOOLS** that allow customers the ability to independently implement track modifications off line without overhauling the entire system.
- ◆ **ADMIN TOOLS** providing customers with the ability to configure multi-level securities with independent permissions for users, groups, and workstations.

DESCRIPTION

DOC®:TWC is a Computerized Track Warrant Control system used for dispatching trains in dark territory operating under the GCOR rule set. The system employs world proven hardware and software tools to control strictly dark territory or combinations of CTC and dark territory.

DOC®:TWC was developed to provide the rail customer with a low cost, highly reliable Computer Aided Dispatching system that takes advantage of the most recent technology advances to provide the functionality and reliability needed in a railroad dispatching system.

With the RailComm DOC®:TWC system, users can easily and independently create new systems and modify existing systems.



ATTRIBUTES

By taking advantage of technology readily available today, DOC[®]:TWC provides the highest level of computer functionality currently found in the market place for railroad control applications including:

- GCOR Compliant Track Warrant Control
- Full Conflict Checking
- Automatic Completion of Warrants
- Control mixed signaled and dark territories
- Train Sheets
- Forms / Bulletins
- Temporary Speed Restrictions
- Track Out Of Service

The DOC[®]:TWC system includes a set of system tools consisting of:

- **System Configuration** – Allows the user to create system configuration files and set specific operating parameters.
- **Graphical Designer** – Optional tool that allows the user to create drawings of their property and to uniquely customize different territories within a single system.

The DOC[®]:TWC system uses the latest interface protocol providing versatility and flexibility to interface with a variety of different relational and non- relational database products without the need to redesign or redevelop major portions of the system.

The RailComm DOC[®]:TWC is currently in use in North and Central America.



SPECIFICATIONS

KEY TECHNOLOGIES

- Microsoft Windows Operating System
- C++, object-oriented programming
- Commercial off-the-shelf computers, components, and programming libraries
- Fully compliant SQL database



RAILCOMM

Toll Free (877) 724-5266

(585) 377-3360

www.RailComm.com

info@RailComm.com