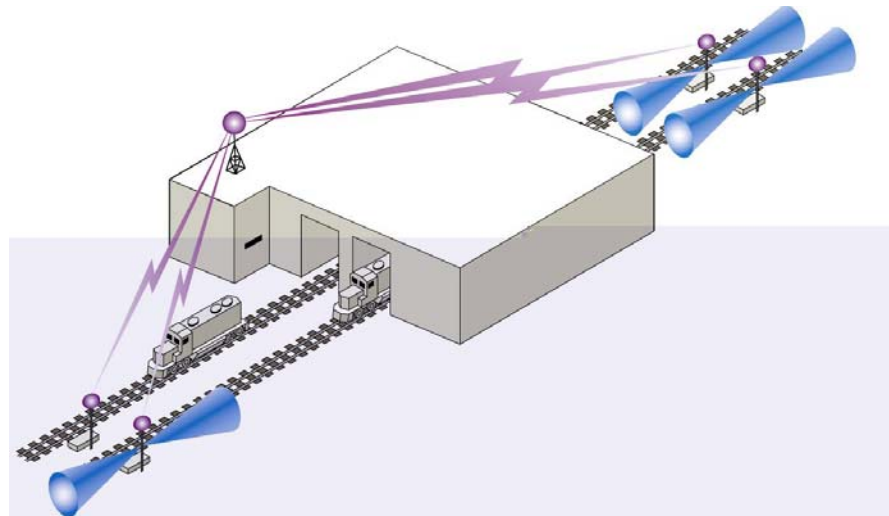


Wireless Remote Control DERAIL

FEATURES

- ◆ **REMOTE CONTROL Derails** by computer or push button control panel.
- ◆ **AUTOMATIC LOGGING** complies with Federal Railroad Administration (FRA) rules.
- ◆ **DERAIL BLUE FLAG PROTECTION** provides clear indication of Derail engagement.
- ◆ **SOLAR or AC POWERED w/ BATTERY BACKUP** for continuous and reliable operation.
- ◆ **SIMPLE INSTALLATION** solar power requires no trenching or field cabling.



Protect maintenance and fueling areas with Remote Control Derails

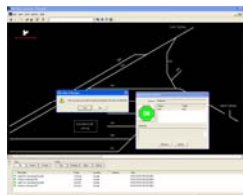
ADVANTAGES

- Save time and improve productivity by operating derails from a central location.
- Increase safety performance by remotely protecting maintenance and fueling facilities.
- Automate FRA required record logging and reporting.

OPTIONS

◆ **COMPUTER CONTROL** allows

- Custom Reporting
- Event logging
- Authorization codes



◆ **PUSHBUTTON CONTROL** with:

- Key access
- Derail indicators
- Occupancy indicator



DESCRIPTION

RailComm's Wireless Remote Control Derail system is a fully automated protection system, used to control derails and blue flags with railroad proven and secure coded spread spectrum RF technology.

The system was developed to provide the railroader a safer and more efficient method of controlling derails and blue flags that protect your maintenance and fueling facilities.

The optional Computer Control allows automatic logging of the time, date, and trade name used for each control command and field status change.



ATTRIBUTES

RailComm's Wireless Remote Control Derail works with all train detection systems including track circuit, inductive loop, and wheel counter. If a train is detected within the protection zone, the derail is locked out and prevented from being moved.

The Remote Control Derail uses a secure 2.4 GHz Spread Spectrum radio network to provide full remote control capabilities. Multiple derails can be controlled using a single network.

The Wireless Remote Control Derail is battery powered with solar backup to provide uninterrupted operation.



No field cabling to install and maintain.

The RailComm Wireless Remote Control Derail is currently in use in many Class 1 yards across North America.

SPECIFICATIONS

ELECTRICAL

- Solar Charged Battery
- AC Charged Battery (optional)

BATTERY

- 12 V – sealed maintenance free

OPERATING TEMPERATURE

- Operates in -40°C to $+80^{\circ}\text{C}$

DERAIL ENGAGED INDICATION

- Strobed or Steady Blue Lamp.
- Mechanical Flag.