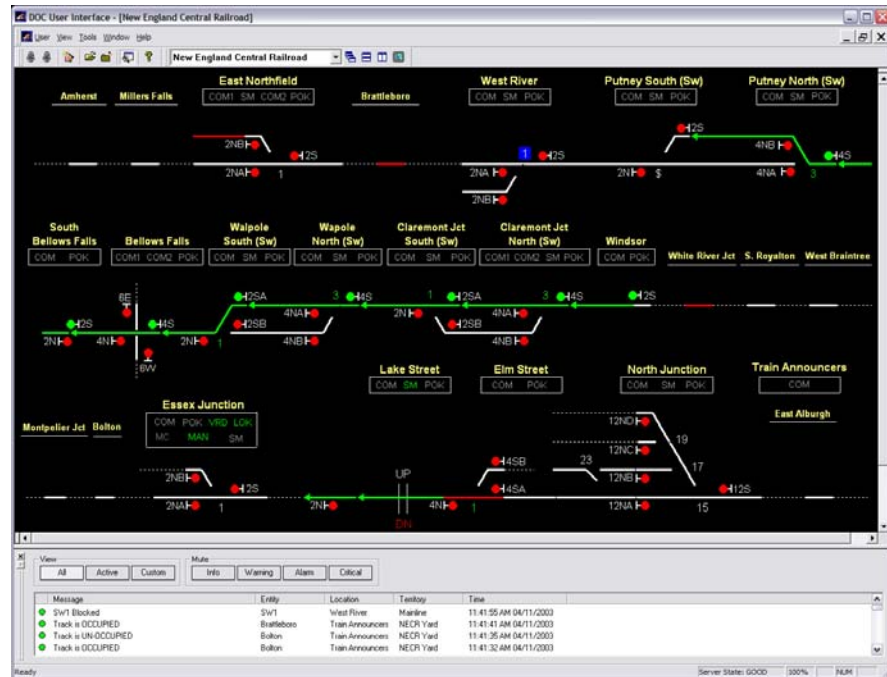


# Centralized Traffic Control Domain Operations Controller (DOC<sup>®</sup>:CTC)

## FEATURES

- ◆ **USER-FRIENDLY INTERFACE** operates within the familiar Windows environment.
- ◆ **SCALABLE** from single workstation up to a fully redundant client server system supporting multiple dispatchers.
- ◆ **UPGRADEABLE** providing migration paths from smaller systems to the more complex allowing you to acquire the tools and functionality needed today and build upon the system as needed in the future.
- ◆ **FLEXIBLE** to interface with a variety of different relational and non-relational database products.
- ◆ **STATE-OF-THE-ART** design to take full advantage of the benefits available of the latest object oriented programming technologies.



## DESCRIPTION

DOC<sup>®</sup>:CTC is a Computer Aided Dispatching system used to automate the dispatching functions necessary for efficient mainline rail operation. The system employs world proven hardware and software tools to interface and communicate through the existing signal infrastructure.

DOC<sup>®</sup>:CTC was developed to provide the rail customer with a low cost, highly reliable Computer Aided Dispatching platform that takes advantage of the most recent technology advances to provide the functionality and reliability required by railroad control applications.

With the RailComm DOC<sup>®</sup>:CTC system, users can easily and independently create new systems and modify existing systems.



## ATTRIBUTES

By taking advantage of technology readily available today, DOC<sup>®</sup>:CTC provides the highest level of computer functionality currently found in the market place for:

- Individual Switch Control
- eNtrance & eXit (NX) Routing
- Stacking Moves (Route Stacking)
- Remote Switch Blocking
- Remote Derail Control
- Remote Blue Flag Protection
- Event Recording
- Supports FRA Reports for logging events
- Graphical Playback
- Switch Diagnostic Alarms
- Switch Diagnostic Reports
- Multi-level Security System
- Vital Field Test Mode

The DOC<sup>®</sup>:CTC system includes the capability to dispatch multiple, geographically separated and independent rail lines from a single dispatch seat. This means you do not have to replicate dispatch personnel or equipment for each railroad or territory, resulting in significant savings.

The DOC<sup>®</sup>:CTC system includes a set of system tools consisting of:

- **System Configuration** – Allows the user to create system configuration files and set specific operating parameters.
- **Graphical Designer** – Optional tool that allows the user to create drawings of their property and to uniquely customize different territories within a single system.

The DOC<sup>®</sup>:CTC system uses the latest interface protocol providing versatility and flexibility to interface with a variety of different relational and non- relational database products without the need to redesign or redevelop major portions of the system. The DOC<sup>®</sup>:CTC system provides the ability to support multiple communications protocol and methods (serial, modem, modbus, ip) for communicating with the field. The system is designed to accept new methods and protocol (existing and future) with minimal modification.



## SPECIFICATIONS

### KEY TECHNOLOGIES

- Microsoft Windows Operating System
- C++, object-oriented programming
- Commercial off-the-shelf computers, components, and programming libraries
- Fully compliant SQL database



**RAILCOMM**

Toll Free (877) 724-5266

(585) 377-3360

[www.RailComm.com](http://www.RailComm.com)

[info@RailComm.com](mailto:info@RailComm.com)